

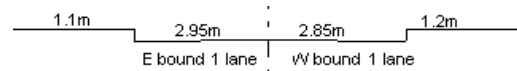
YEAR 2022

COVERAGE (B) STATION 6207

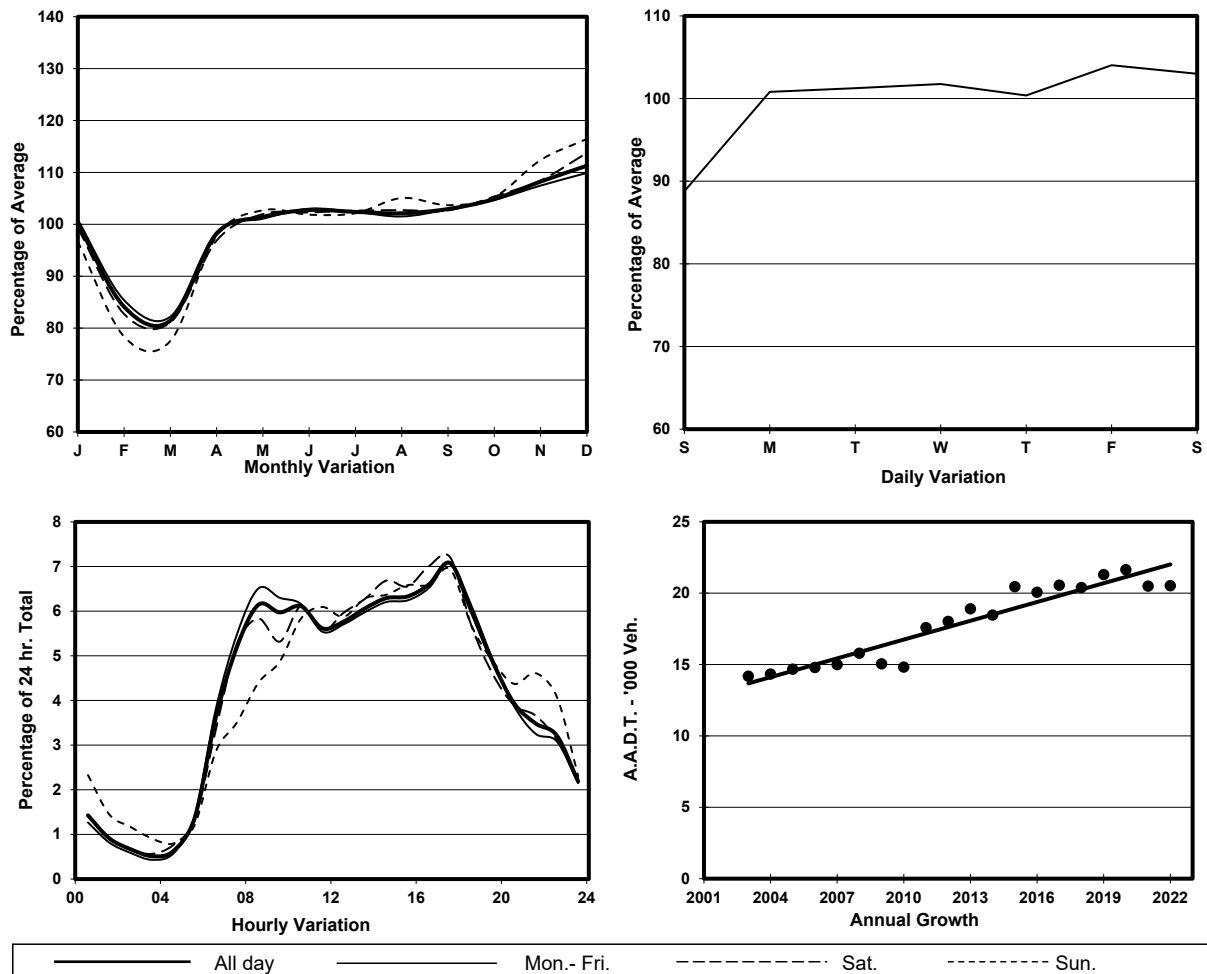
ROAD NETWORK MAJOR

ROAD TYPE RURAL ROAD

LINK KAM TIN RD (from KAM SHEUNG RD WESTERN JUNCTION to FAN KAM RD)



1. TRAFFIC FLOW VARIATION AND GROWTH



2. TRAFFIC CHARACTERISTICS (BY DIRECTION)

Parameter	All - Day	Mon. - Fri.	Sat.	Sun.
EAST BOUND				
A.A.D.T.	10320	10720	10890	8260
R 12 / 24 - %	71.8	72.8	71.6	66.1
R 16 / 24 - %	90.1	90.7	89.7	86.8
AM Peak Hour	0900-1000	0800-0900	0900-1000	0900-1000
One-way flow at AM peak hour	640	730	620	360
T - % (AM)	-	8.2	-	-
PM Peak Hour	1700-1800	1700-1800	1600-1700	1600-1700
One-way flow at PM peak hour	690	720	760	550
T - % (PM)	-	6.4	-	-
Prop.of commercial vehicles - 16 hr.	-	8.1	-	-
WEST BOUND				
A.A.D.T.	10200	10350	10330	9800
R 12 / 24 - %	74.6	75	75.4	71.5
R 16 / 24 - %	87.3	87.1	87.8	87.1
AM Peak Hour	0800-0900	0800-0900	0700-0800	0900-1000
One-way flow at AM peak hour	620	650	700	530
T - % (AM)	-	11.5	-	-
PM Peak Hour	1700-1800	1700-1800	1700-1800	1700-1800
One-way flow at PM peak hour	760	770	810	720
T - % (PM)	-	5	-	-
Prop.of commercial vehicles - 16 hr.	-	8.6	-	-

3. OTHER INFORMATION AND COMMENT

4. Vehicle classification and occupancy - Monday to Friday

Time		Class of vehicle									
		Motor Cycle	Private Car	Taxi	Private LB	PLB	Goods veh.		Non Fr. Bus	Fr. Bus	
							Light	M & H		SD	DD
0700-0800	Pro	4.5	52.5	9.6	1.2	5.4	16.8	8.1	0.3	0.0	1.6
	Ocp	1.0	1.6	2.1	10.0	13.1	1.6	1.2	26.0	0.0	33.9
0800-0900	Pro	0.9	58.9	9.8	0.6	4.9	15.2	8.0	0.3	0.0	1.4
	Ocp	1.0	1.5	2.1	9.0	14.1	1.6	1.3	14.0	0.0	26.6
0900-1000	Pro	1.8	50.1	11.3	0.5	3.3	21.6	9.8	0.3	0.0	1.4
	Ocp	1.0	1.3	1.7	2.5	11.2	1.3	1.3	1.0	0.0	16.9
1000-1100	Pro	3.8	42.4	7.5	1.0	3.1	27.0	13.7	0.0	0.0	1.6
	Ocp	1.0	1.3	1.8	1.3	9.4	1.4	1.4	0.0	0.0	9.8
1100-1200	Pro	1.3	52.7	7.0	0.3	3.5	27.3	6.0	0.3	0.0	1.5
	Ocp	1.0	1.5	1.9	3.0	8.1	1.5	1.0	2.0	0.0	13.3
1200-1300	Pro	2.9	47.8	9.2	2.2	2.9	25.3	8.2	0.3	0.0	1.2
	Ocp	1.1	1.4	1.8	7.3	10.8	1.4	1.1	2.0	0.0	16.0
1300-1400	Pro	4.2	53.3	8.6	1.5	2.7	21.1	7.4	0.0	0.0	1.1
	Ocp	1.1	1.4	1.7	5.4	11.1	1.4	1.2	0.0	0.0	17.3
1400-1500	Pro	2.6	54.9	6.7	1.3	3.2	18.8	11.2	0.0	0.0	1.4
	Ocp	1.0	1.4	1.6	1.3	10.9	1.5	1.2	0.0	0.0	14.1
1500-1600	Pro	2.9	57.6	4.6	0.6	2.0	22.0	8.9	0.0	0.0	1.5
	Ocp	1.1	1.4	1.5	1.5	12.1	1.4	1.1	0.0	0.0	13.5
1600-1700	Pro	3.4	57.5	7.4	1.9	2.2	19.8	5.3	1.2	0.0	1.4
	Ocp	1.0	1.4	1.7	2.2	8.4	1.2	1.3	5.0	0.0	17.6
1700-1800 Peak hour	Pro	4.2	57.1	5.5	1.6	3.2	22.7	4.0	0.5	0.0	1.2
	Ocp	1.1	1.3	1.9	2.7	16.0	1.5	1.3	19.0	0.0	25.3
1800-1900	Pro	3.3	67.6	7.3	0.3	4.1	13.0	3.3	0.0	0.0	1.2
	Ocp	1.0	1.4	1.5	1.0	16.5	1.4	1.1	0.0	0.0	30.8
1900-2000	Pro	4.2	72.8	9.5	0.0	2.9	8.2	0.5	0.5	0.0	1.3
	Ocp	1.2	1.3	2.2	0.0	9.4	1.3	1.0	1.0	0.0	22.5
2000-2100	Pro	1.9	66.7	10.4	0.5	6.2	9.5	2.4	0.5	0.0	2.0
	Ocp	1.0	1.3	1.6	1.0	10.0	1.2	1.0	1.0	0.0	12.9
2100-2200	Pro	5.9	57.0	19.9	0.0	4.8	8.1	2.2	0.0	0.0	2.2
	Ocp	1.3	1.4	1.8	0.0	11.6	1.2	1.3	0.0	0.0	14.4
2200-2300	Pro	4.0	61.4	18.8	0.0	1.7	9.1	1.7	1.1	0.0	2.3
	Ocp	1.3	1.4	1.8	0.0	7.3	1.3	1.0	1.0	0.0	14.5
16 hours	Pro	3.1	56.8	9.0	0.9	3.4	18.5	6.5	0.3	0.0	1.5
	Ocp	1.1	1.4	1.8	4.3	11.8	1.4	1.2	6.8	0.0	18.9

Legend: Pro. Proportion of vehicles in % (Sum may not add up to 100% due to figure rounding)*

Ocp. Average occupancy of vehicles including both driver and passengers*

M&H Medium and Heavy

* All traffic data are collected from combined bounds